

PDUeX

Innovation in Power Manufacturing

Email- sales@pduexpertuk.com



DESIGNED AND MANUFACTURED

IN THE UK

Save Money, Time & Energy with

PDUeX



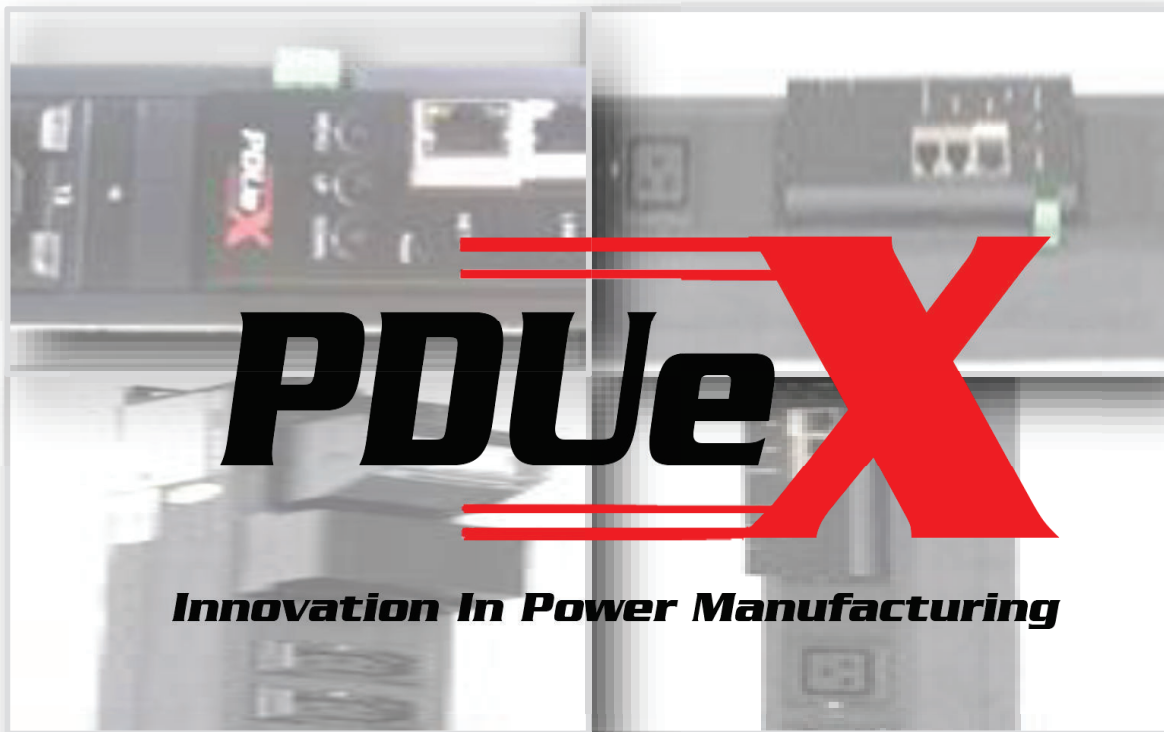
Innovation in Power Manufacturing



Innovation in Power Manufacturing

Email- sales@pduexpertuk.com

Remote Monitored PDU



Vertical N1 N2 N3 N4

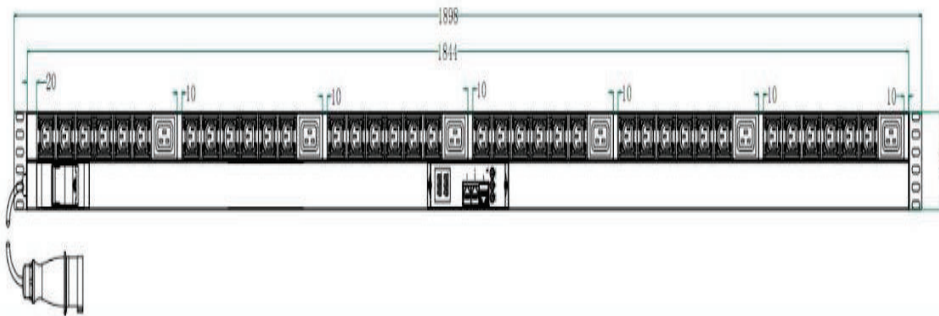
KWX- N1 N2 N3 N4

Remote Monitored PDU

KWX-N series is our remote monitored PDU that supports multitask and multiuser access. The software supports various TCP/IP protocols, Including: HTTP, HTTPS, SSL, SNMP, TELNET, SSH, SMTP etc., to monitor the voltage, total current, the rack environment. The KWX-N2 & KWX-N4 also monitors each ports current and switch on/off per port.

Innovation in Power Manufacturing

The most innovative PDU on the market



**Intelligent, Rack Mounted,
Power Distribution Unit**

KWX-N1 PDU

KWX-N24A36X6-V1CB

Remote Monitored PDU



- ✓ Monitor The Total Current
- ✓ Monitor The Input & Output Voltage
- ✓ Monitor The Total kWh
- ✓ Power Factor Recognition
- ✓ 55°C Hot Rack Operating
- ✓ SMS, SNMP & Email Notification
- ✓ 24 x Lockable IEC C13 & 6 x IEC C19 Outlets
- ✓ Built In Environmental Monitoring Technology As Standard
- ✓ Hot Swappable Network
- ✓ Infrared Monitoring
- ✓ Temperature & Humidity Alarm
- ✓ Water Logging Alarm
- ✓ Rack Door Open Alarm
- ✓ Smoke Alarm
- ✓ Up to 8 Plug ' n ' Play Sensors
- ✓ Blade Server Ready
- ✓ Dry Connector For Audible Alarms
- ✓ Intelligent Outlet Type & Number Recognition
- ✓ 24v & 48v, Single Phase 120v & 240V, 3 Phase 400v



KWX-N32A36X6-V1CB

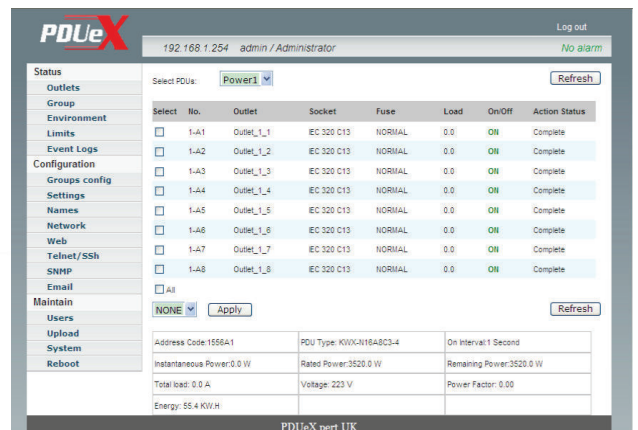
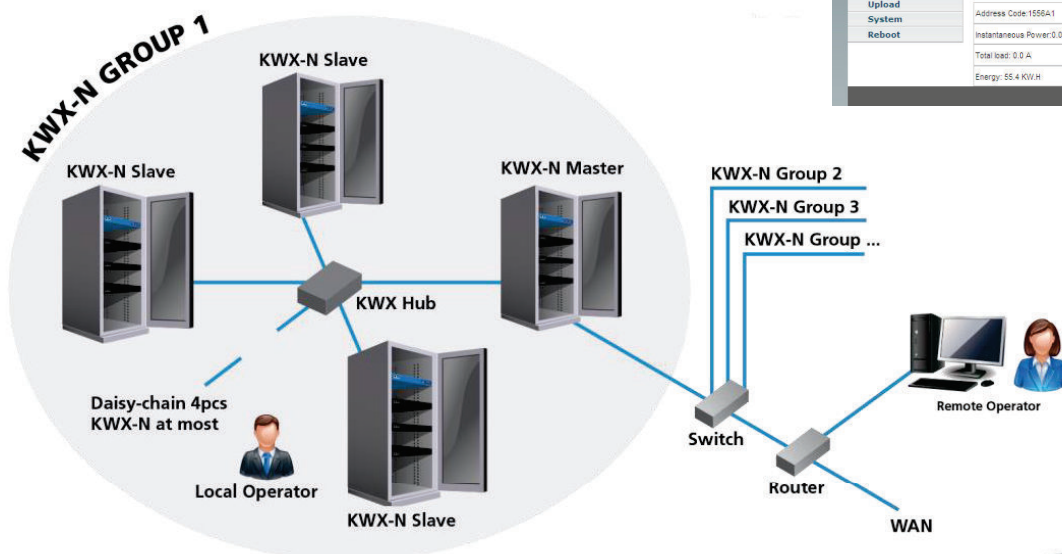
KWX-N1 Series is the new generation of PDU. It combines network power distribution, environmental monitoring technology and provides real-time power consumption of total current load and voltage. Unit Metered, KWX series can be access via LAN/WAN or over serial interface. KWX-N series is a remote monitor PDU with embedded multithreading inner core RTOS (Real Time Operating Systems), that supports multitask & multiuser access. The software supports various TCP/IP Protocols, including HTTP, HTTPS, SSL, SNMP, TELNET, SSH, SMTP etc. 36 x Lockable IEC C13 & 6 x IEC C19 Outlets, 32A Commando Connector.

Optional: Temperature and humidity, smoke alarm
Water logging alarm, infrared alarm, and door alarm.

Monitor: Monitor the total current, monitor the total kWh, monitor the input voltage, monitor environment Temperature, monitor environment humidity, monitor environment smoke. Monitor water logging, infrared monitoring, and door open monitoring.

Alarm settings: Total current over the limit, on the temperature limit, on the humidity limit, smoke alarm and water logging alarm, infrared enters alarm, door open alarm, dry connection.

Radiation Connection



The most innovative PDU on the market



**Intelligent, Rack Mounted,
Power Distribution Unit**

KWX-N2 PDU

KWX-N32A24P20X4-V2CB

Remote Total Power Monitoring &
Outlet Metering



- ✓ Monitor Each Sockets Current Usage
- ✓ Monitor The Total Current
- ✓ Monitors The Input & Output Voltage
- ✓ Monitor The Total kWh
- ✓ Power Factor Recognition
- ✓ 55 °C Hot Rack Operating
- ✓ SMS, SNMP & Email Notification
- ✓ 20 x Lockable IEC C13 & 4 x IEC C19 Outlets
- ✓ Built In Environmental Monitoring Technology As Standard
- ✓ Infrared Monitoring
- ✓ Temperature & Humidity Alarm
- ✓ Hot Swappable Network
- ✓ Water Logging Alarm
- ✓ Rack Door Open Alarm
- ✓ Smoke Alarm
- ✓ Up to 8 Plug ' n ' Play Sensors
- ✓ Blade Server Ready
- ✓ Dry Connector For Audible Alarms
- ✓ Intelligent Outlet Type & Number Recognition
- ✓ 24v & 48v, Single Phase 120v & 240V, 3 Phase 400v



KWX-N32A24P20X4-V2CB

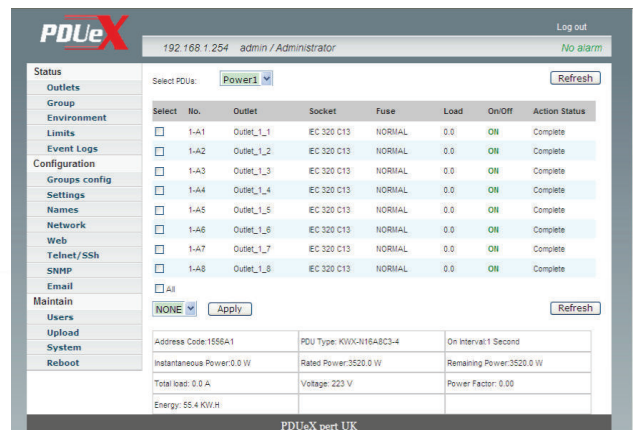
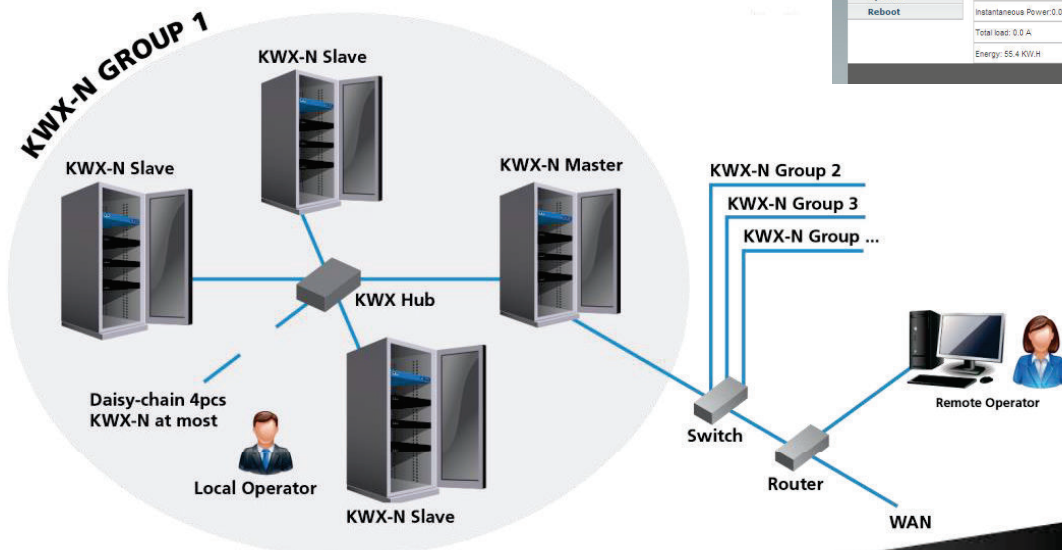
KWX-N2 Series is the new generation of PDU. It combines network power distribution, environmental monitoring technology and provides real-time power consumption of total current load and voltage. Unit Metered, KWX series can be access via LAN/WAN or over serial interface. KWX-N series is a remote monitor PDU with embedded multithreading inner core RTOS (Real Time Operating Systems), that supports multitask & multiuser access. The software supports various TCP/IP Protocols, including HTTP, HTTPS, SSL, SNMP, TELNET, SSH, SMTP etc. 20 x Lockable IEC C13 & 4 x IEC C19 outlets, 32Amp commando connector.

Optional: Temperature and humidity, smoke alarm
Water logging alarm, infrared alarm, and door alarm.

Monitor: Monitor the total current, monitor the total kWh, monitor the input voltage, monitor environment Temperature, monitor environment humidity, monitor environment smoke. Monitor water logging, infrared monitoring, and door open monitoring.

Alarm settings: Total current over the limit, on the temperature limit, on the humidity limit, smoke alarm and water logging alarm, infrared enters alarm, door open alarm, dry connection

Radiation Connection



The most innovative PDU on the market



**Intelligent, Rack Mounted,
Power Distribution Unit**

KWX N3 PDU

KWX-N16A24SCHU-V3

**Remote Monitored PDU &
Outlet Switchable**



www.pduexpertuk.com

- ✓ Monitor The Total Current
- ✓ Monitor The Input Voltage
- ✓ Monitor The Total kWh
- ✓ Sequential Power on/off
- ✓ Sequential Boot UP
- ✓ Power Status Holding
- ✓ Power Factor Recognition
- ✓ Monitors Input & Output Voltage
- ✓ 55°C Hot Rack Operating
- ✓ SMS, SNMP & Email Notification
- ✓ 24 x Schuko Sockets
- ✓ Built In Environmental Monitoring Technology As Standard
- ✓ Hot Swappable Network
- ✓ Infrared Monitoring
- ✓ Temperature & Humidity Alarm
- ✓ Water Logging Alarm
- ✓ Rack Door Open Alarm
- ✓ Smoke Alarm
- ✓ Up to 8 Plug ' n ' Play Sensors
- ✓ Blade Server Ready
- ✓ Dry Connector For Audible Alarms
- ✓ Intelligent Outlet Type & Number Recognition
- ✓ 24v & 48v, Single Phase 120v & 240V, 3 Phase 400v



KWX-N16A24SCHU-V3

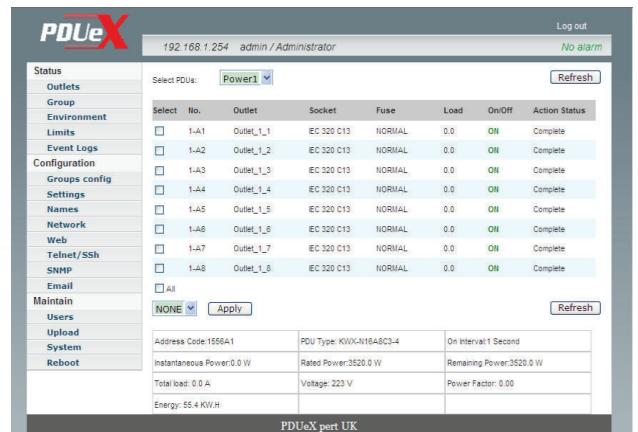
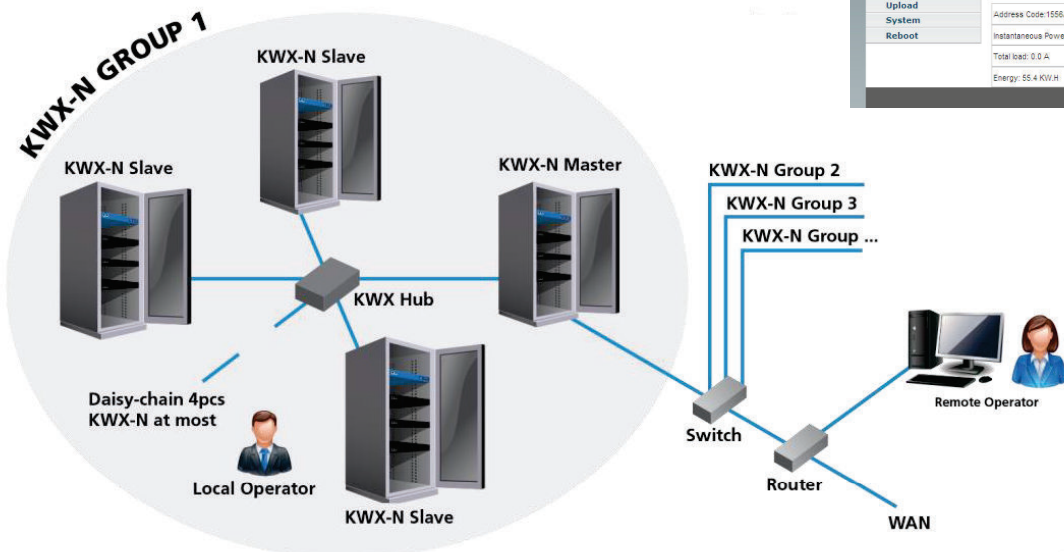
KWX-N3 Series is the new generation of PDU. It combines network power distribution, environmental monitoring technology and provides real-time power Consumption of total current load and voltage. Unit Metered, KEX series can be access via LAN/WAN or over serial interface. KWX-N series is a remote monitor PDU with embedded multithreading inner core RTOS (Real Time Operating Systems), that supports multitask & multiuser access. The software supports various TCP/IP Protocols, including HTTP, HTTPS, SSL, SNMP, TELNET, SSH, SMTP etc. 24 x Schuko sockets, 1 x IEC 30609 16A Commando connector.

Optional: Temperature and humidity, smoke alarm
Water logging alarm, infrared alarm, and door alarm.

Monitor: Monitor the total current, monitor the total kWh, monitor the input voltage, monitor environment Temperature, monitor environment humidity, monitor environment smoke. Monitor water logging, infrared monitoring, and door open monitoring.

Alarm settings: Total current over the limit, on the temperature limit, on the humidity limit, smoke alarm and water logging alarm, infrared enters alarm, door open alarm, dry connection

Radiation Connection



The most innovative PDU on the market



**Intelligent, Rack Mounted,
Power Distribution Unit**

KWX-N4 PDU

KWX-N32A24PX6-V4CB

Remote Monitored ATS, Outlet Switchable
& Outlets Metered



www.pduexpertuk.com

- ✓ Switchable Outlets
- ✓ Sequential Power on/off
- ✓ Sequential Boot Up
- ✓ Power Status Holding
- ✓ Monitor Each Sockets Power usage
- ✓ Monitor The Total Current
- ✓ Monitor The Input Voltage
- ✓ Monitor The Total kWh
- ✓ Power Factor Recognition
- ✓ Monitors Input & Output Voltage
- ✓ 55 °C Hot Rack Operating
- ✓ SMS, SNMP & Email Notification
- ✓ 24 x Lockable IEC C13 & 6 x IEC C19 Outlets
- ✓ Hot Swappable Network
- ✓ Built In Environmental Monitoring Technology As Standard
- ✓ Infrared Monitoring
- ✓ Temperature & Humidity Alarm
- ✓ Water Logging Alarm
- ✓ Rack Door Open Alarm
- ✓ Smoke Alarm
- ✓ Up to 8 Plug ' n ' Play Sensors
- ✓ Blade Server Ready
- ✓ Dry Connector For Audible Alarms
- ✓ Intelligent Outlet Type & Number Recognition
- ✓ 24v & 48v, Single Phase 120v & 240V, 3 Phase 400v



KWX-N32A36X6-V4CB

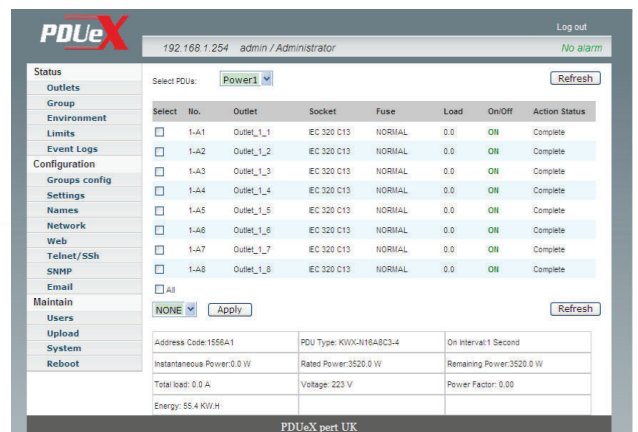
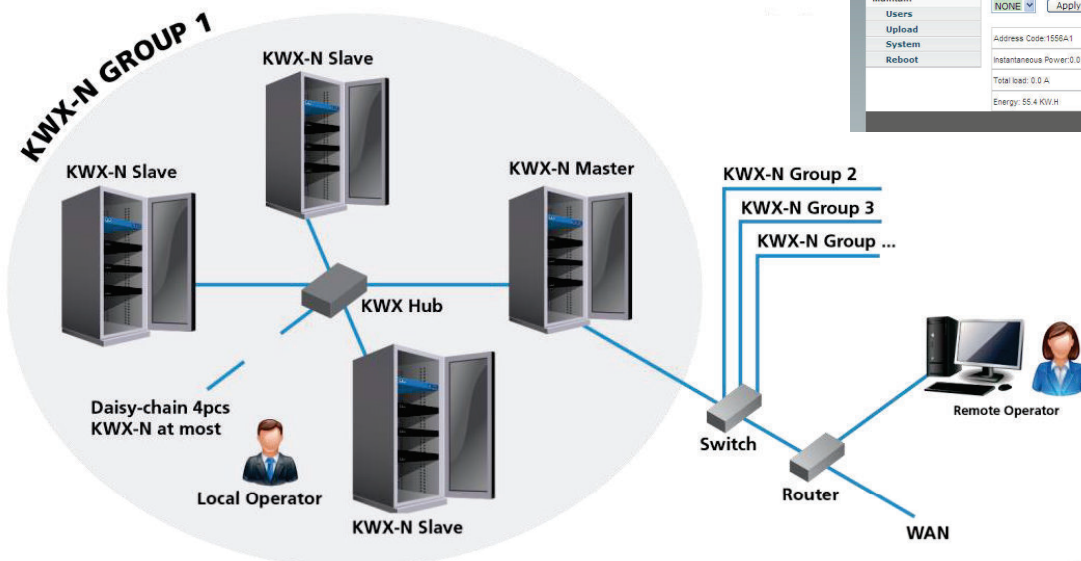
KWX-N4 Series is the new generation of PDU. It combines network power distribution, environmental monitoring technology and provides real-time power consumption of total current load and voltage. Unit Metered, KWX series can be access via LAN/WAN or over serial interface. KWX-N series is a remote monitor PDU with embedded multithreading inner core RTOS (Real Time Operating Systems), that supports multitask & multiuser access. The software supports various TCP/IP Protocols, including HTTP, HTTPS, SSL, SNMP, TELNET, SSH, SMTP etc. 36 x Lockable IEC C13 & 6 x IEC C19 Outlets, 32A Commando Connector.

Optional: Temperature and humidity, smoke alarm
Water logging alarm, infrared alarm, and door alarm.

Monitor: Monitor the total current, monitor the total kWh, monitor the input voltage, monitor environment Temperature, monitor environment humidity, monitor environment smoke. Monitor water logging, infrared monitoring, and door open monitoring.

Alarm settings: Total current over the limit, on the temperature limit, on the humidity limit, smoke alarm and water logging alarm, infrared enters alarm, door open alarm, dry connection

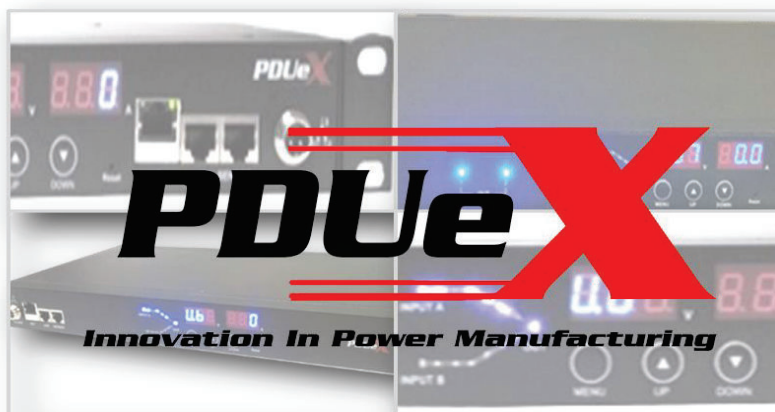
Radiation Connection



KWX-ATS H1 H1 H3 H4

KWX-N1 N2 N3 N4 H

KWX-N1 N2 N3 N4 V



Sockets Available



| Items | Description | N1 | N2 | N3 | N4 | |
|-------------------|----------------------------------|-------------------------------------|----|----|----|---|
| Monitor Functions | LED Display | Current Load of total and per ports | ✓ | ✓ | ✓ | ✓ |
| | LED flashes when overload | ✓ | ✓ | ✓ | ✓ | |
| | PDU Address, Version Number | ✓ | ✓ | ✓ | ✓ | |
| | Managing software/Hyper Terminal | Total Current Load | ✓ | ✓ | ✓ | ✓ |
| | | Monitors Current Load Per Ports | ✗ | ✓ | ✗ | ✓ |
| | | Input Voltage | ✓ | ✓ | ✓ | ✓ |
| | | Max. Voltage configured | ✓ | ✓ | ✓ | ✓ |
| | | Max. Current configured | ✓ | ✓ | ✓ | ✓ |
| | | Sensors state (optional) | ✓ | ✓ | ✓ | ✓ |
| Control Functions | PC Control | On/off of individual unit | ✗ | ✗ | ✓ | ✓ |
| | | Power On /Off time setting | ✗ | ✗ | ✓ | ✓ |
| | | Stay the same after restart | ✗ | ✗ | ✓ | ✓ |
| Accessing Method | RS 485 port | ✓ | ✓ | ✓ | ✓ | |
| Daisy-chain ways | Serial and radiation connection | ✓ | ✓ | ✓ | ✓ | |



Humidity



Water Logging



Infrared Alarm



Door Alarm



Temperature



Smoke Alarm



Each Port on/off



19" or Vertical



Current Display



Energy Display



Voltage Display



E-mail Alarm



Web Browsing



Protocol



RS 485



Dry Connector

KWX PDU SENSORS

KWX-ATS H1 H1 H3 H4

KWX-N1 N2 N3 N4 H

KWX-N1 N2 N3 N4 V



Infrared Sensor



Door Sensor



**Temperature/
Humidity Sensor**



**Water Logging
Sensor**



Smoke Sensor